

# Update for Safer Halton Scrutiny Board



**Mark Shone, Safety Centre Manager**

Tuesday January 20<sup>th</sup> 2015



[www.cheshirefire.gov.uk](http://www.cheshirefire.gov.uk)

# The next 10 minutes



- The Safety Centre movement
- Project progress in Cheshire
- The rationale
- Programme design
- Centre design
- A focus for collaboration

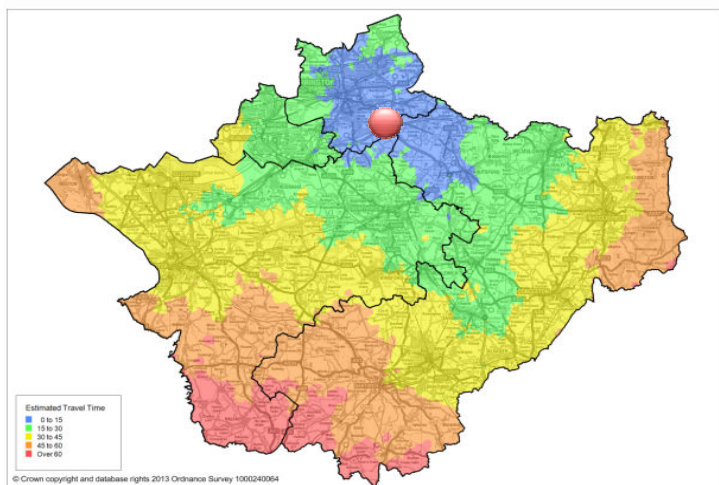
# The Safety Centre movement

- Practical, interactive, experiential safety education for children and other 'at risk' groups
- Realistic scenarios that simulate common hazards not just **FIRE**
- "...better decisions and more knowledgeable following a visit" (*Oxford Brookes 2003*)
- 'LASER' a RoSPA priority
- 13 centres run by emergency services, charities or partnerships with 120,000 visitors





# Project progress to date in Cheshire



- First mooted in 2003
- Emergency Response Review
- Business case development 2013
- Cheshire Fire Authority approve £3.8m budget in February 2014
- Centre manager appointed
- Detailed design work
- Planning permission August 2014
- £1.95m DCLG transformation grant
- Scoping the Centre's legal entity
- Contract to be awarded next month

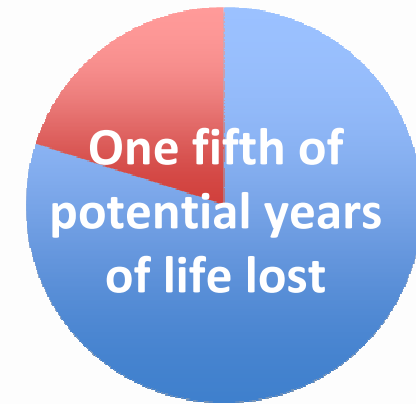
# The rationale

2.8m  
household  
accidents

Road  
145,571  
accidents

14,000 accidental  
deaths

Under  
60



£95  
billion

Public Health Outcomes Framework  
2.7: reduce hospital admissions  
caused by unintentional and  
deliberate injuries in under 18s

Public Health Outcomes Framework  
2.24: reduce falls and injuries in the  
home for over 65s / hip fractures

## Public Health England Health Profiles 2014



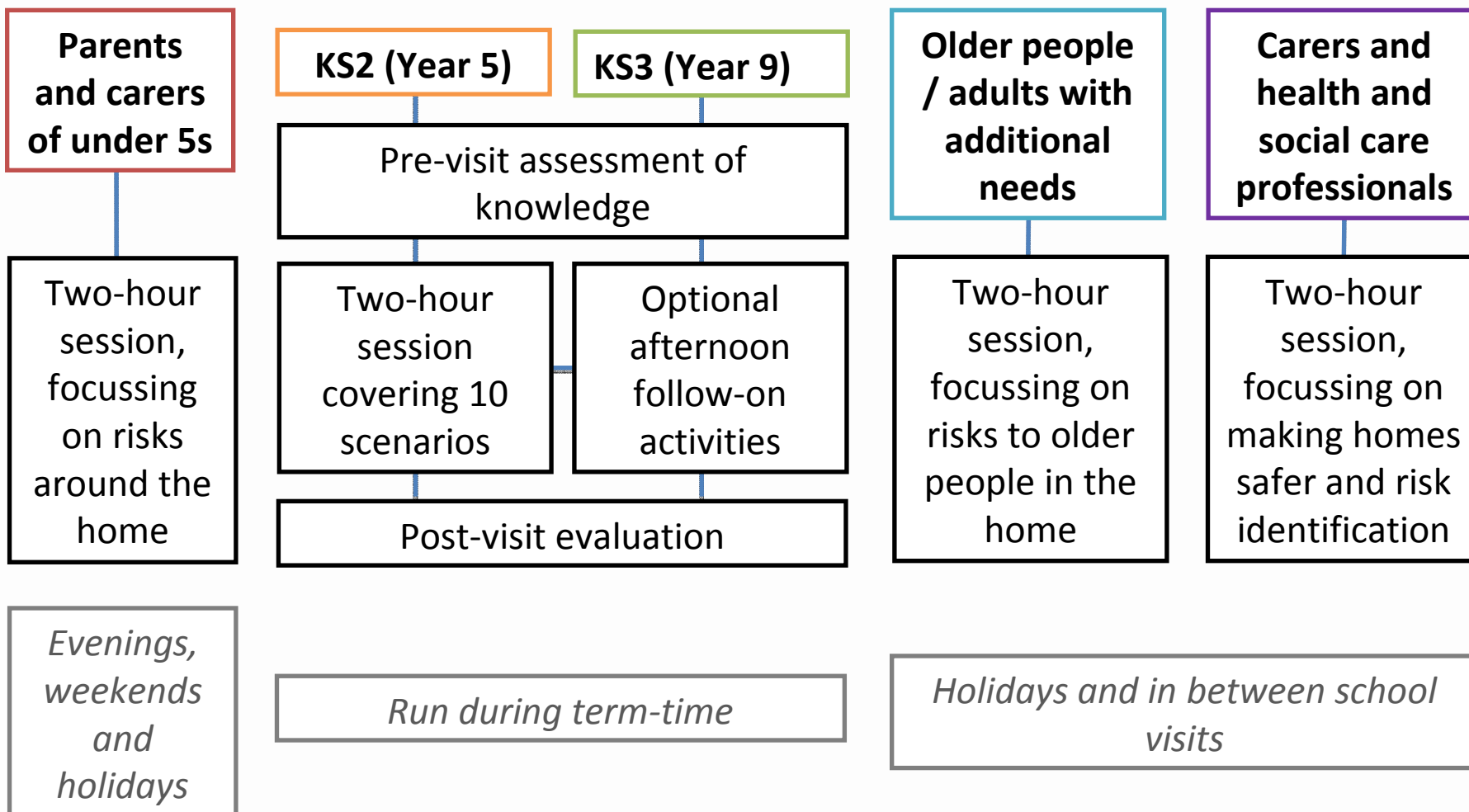
	Cheshire East Council	Cheshire West and Chester	HALTON BOROUGH COUNCIL	WARRINGTON Borough Council
Deprivation	●	●	●	●
Children in poverty	●	●	●	●
Violent crime	●	●	●	●
Obese children (Year 6)	●	●	●	●
Alcohol-specific hospital stays (under 18)	●	●	●	●
Under 18 conceptions	●	●	●	●
Acute sexually transmitted infections	●	●	●	●
Smoking prevalence	●	●	●	●
Hip fractures in over 65s	●	●	●	●
Excess winter deaths	●	●	●	●
Incidence of malignant melanoma	●	●	●	●
Infant mortality	●	●	●	●
Killed and seriously injured on roads	●	●	●	●

## CHIMAT Child Health Profiles 2014



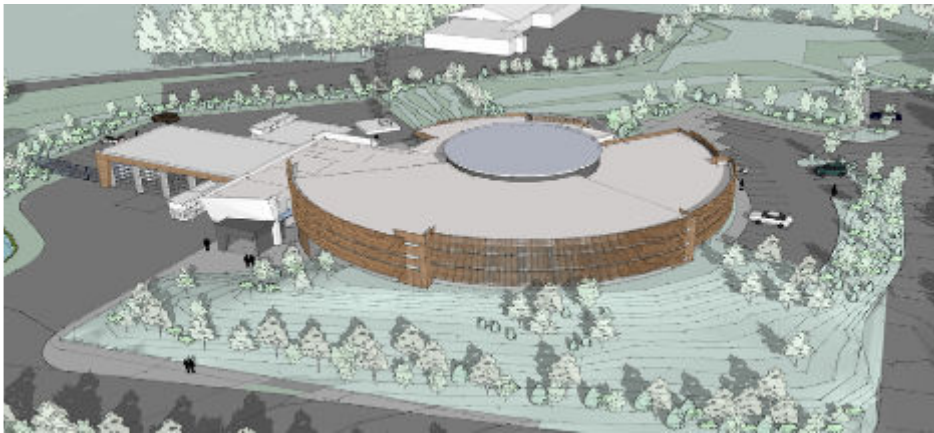
	Cheshire East Council	Cheshire West and Chester	HALTON BOROUGH COUNCIL	WARRINGTON Borough Council
Child mortality (1-17 years)	●	●	●	●
Children killed or seriously injured in road traffic accident	●	●	●	●
Hospital admission due to alcohol	●	●	●	●
Hospital admission due to substance misuse (15-24 years)	●	●	●	●
A&E attendances (0-4)	●	●	●	●
Hospital admissions caused by injuries in children (0-14)	●	●	●	●
Hospital admissions caused by injuries in young people (15-24)	●	●	●	●
Hospital admissions as a result of self-harm	●	●	●	●

# Programme design





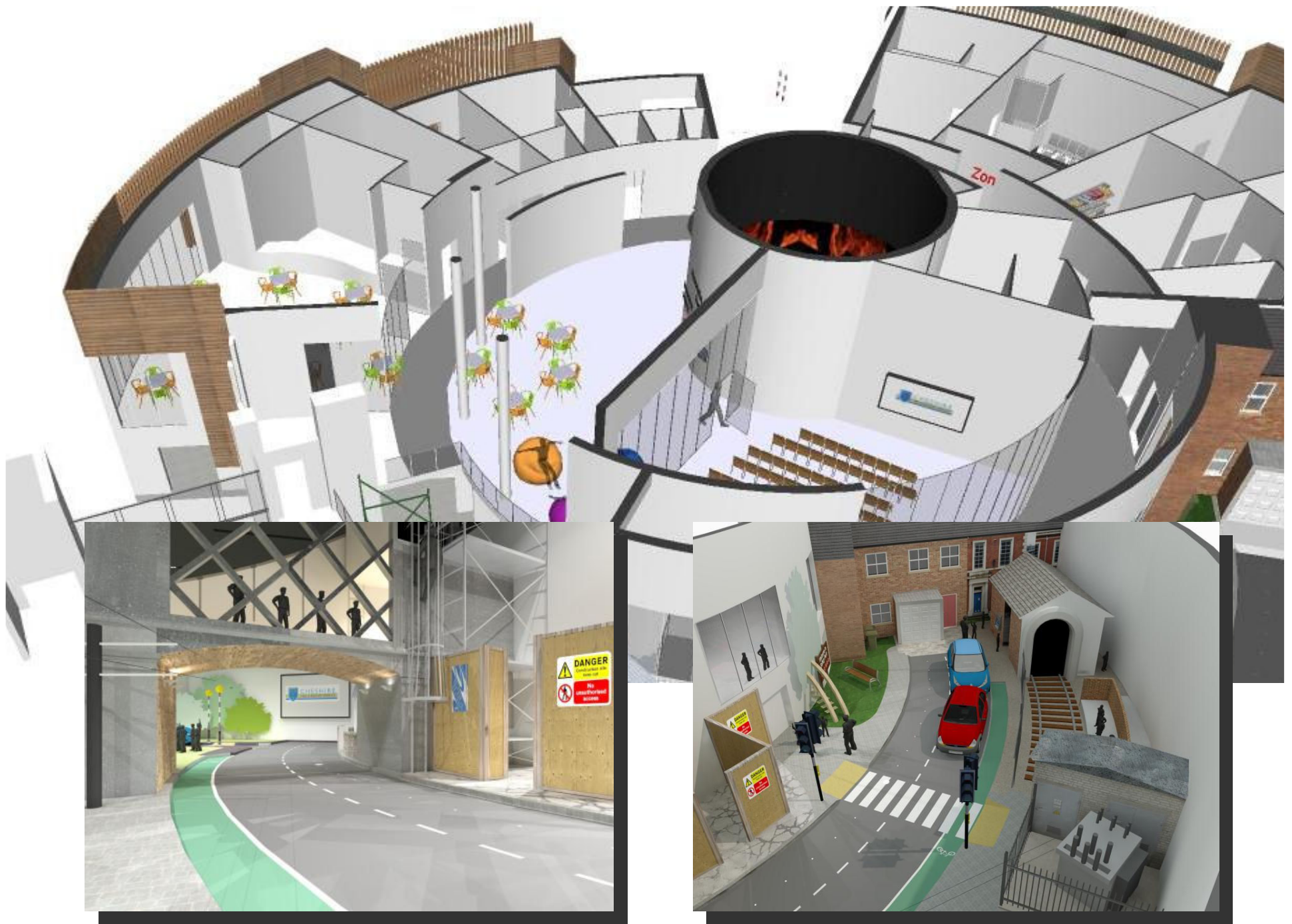
# Centre design



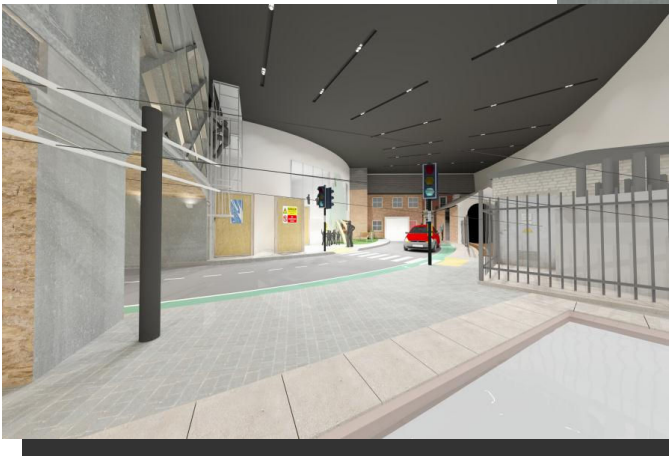


- Watching
- Listening
- Doing
- Smelling
- Feeling
- Experiencing
- Discussing
- Reflecting
- Enjoying









# A focus for collaboration



- As leaders, chief officers and commissioners...our vision is a sub-region in which the risk of citizens coming to avoidable harm at home, on the road and in our communities is reduced to an absolute minimum.
- [We] are fully supportive of Cheshire Fire Authority's work to establish a safety and lifeskills centre. Collectively we believe the centre will provide a catalyst and focal point for a whole host of collaborative and co-ordinated community safety activities aimed at those most at risk.
- We look forward to working with the Authority to ensure it is the best centre of its kind in the country, delivering transformative and evidence-based prevention programmes that make a measurable difference to our communities and ultimately reduce demand on services.







**QUALITY** – data and intelligence to ensure relevance of learning programmes, endorsement and support...



**COMMISSIONING** – accident prevention, road safety, PHSE, assistive technology, training for professionals and carers...



**CO-DELIVERY** – secondment of officers, joint programmes, base for training...



**CUSTOMER REACH** – assist in promoting to schools, professionals and other users....



**SPONSORSHIP** – time, funds or resources in returning for 'naming rights' on a specific scenario, zone or programme...



Building for a

**SAFER FUTURE**

Cheshire's new Safety Centre



**Mark Shone, Safety Centre Manager**

T: 01606 868736 M: 07805 811642

E: [mark.shone@cheshirefire.gov.uk](mailto:mark.shone@cheshirefire.gov.uk) Twitter: @markshone2



Building for a

**SAFER FUTURE**

Cheshire's new Safety Centre



[www.cheshirefire.gov.uk](http://www.cheshirefire.gov.uk)